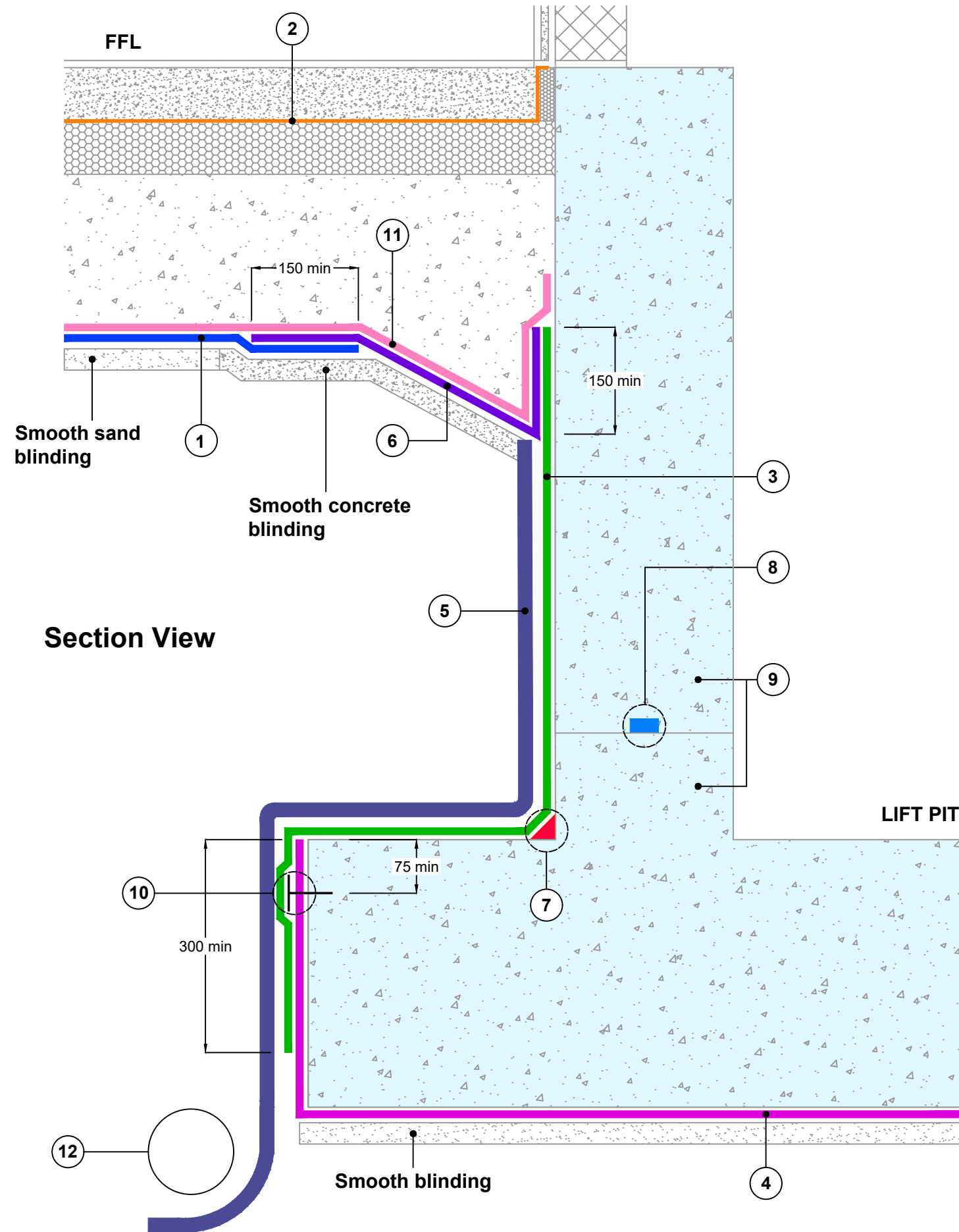


Key to materials:

1	Visqueen Gas Barrier
2	Visqueen Vapour Check or Visqueen Vapour Barrier
3	Visqueen Gas Resistant Self Adhesive Membrane on Visqueen HP Tanking Primer
4	Visqueen Ultimate Geoseal
5	Visqueen Protect&Drain, 12mm
6	VisqueenPro Detailing Strip
7	Visqueen Axiom UniSeal fillet, 35mm x 35mm
8	Visqueen IGW10 Waterstop bedded in Visqueen Waterstop Adhesive
9	Visqueen IGW Watertight Concrete
10	Visqueen Ultimate Retaining Discs at 400mm centres
11	Visqueen TreadGUARD
12	Maintainable land drain by others



Section View

CRITICAL GUIDANCE NOTES

Visqueen Guidance Details are for illustration purposes only. It is the lead designer's responsibility to ensure Guidance Details are incorporated correctly into construction drawings.

Visqueen take no project design liability, or responsibility for the use of Guidance Details. Visqueen have no control over the situation in which the products are installed. Visqueen provide a Contract Design Service where project specific drawings can be produced. Contact Visqueen Technical Services for further information.

Site construction sequencing should be assessed before the appropriate Guidance Detail is selected and approved by the lead designer.

All Visqueen materials must be installed in strict accordance with the Visqueen Product Datasheets and applicable third party certificates.

Lift pit changes of direction to be reinforced with 300mm wide strip of Visqueen Gas Resistant Self Adhesive Membrane on Visqueen HP Tanking Primer prior to installation of primary layer (3) shown on detail.

DPCs and DPC cavity trays to be installed in accordance with BS 8215:1991, PD 6697:2019 and BS 8000-3:2020.

Radon protection in accordance with national building regulations and BR211:2023.

Ground gas protection in accordance with BS 8485:2015 + A1:2019.

Further protection such as ventilation measures (not shown) may be necessary to meet the requirements of BS8485:2015+A1:2019.

Visqueen air and vapour control layers (AVCLs) should be installed in accordance with the recommendations of BS 5250:2021.

Drawing not to scale, use figured dimensions only. All figured dimensions are in millimetres.

Guidance Detail

Date: November 2023

Drawing No: SW-GB-02

Revision: A

Drawn by: JR

Approved by: SD

Tel: 0333 202 6800
 enquiries@visqueen.com
 www.visqueen.com

© Copyright reserved. This drawing may not be reproduced or amended without prior written permission.



**BARRIER BELOW SLAB
 CAST IN SITU RC GROUND BEARING SLAB AT
 LIFT PIT**